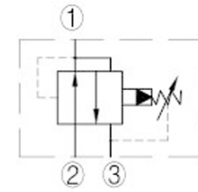
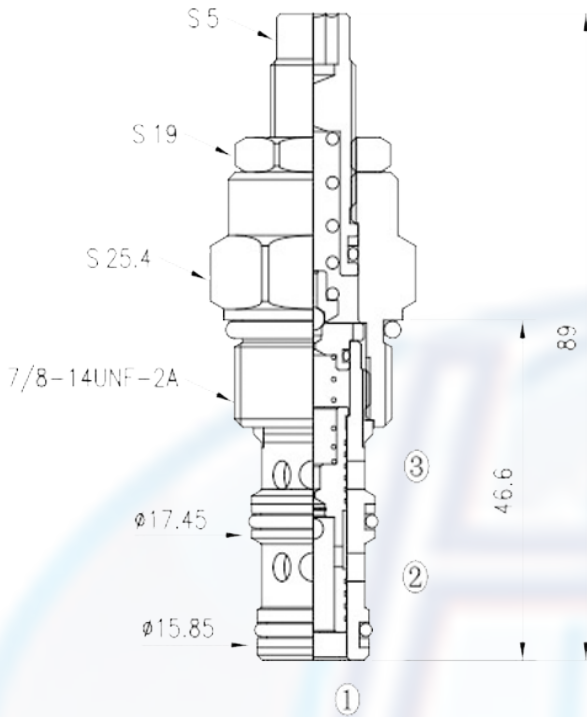


PPR2 - 10

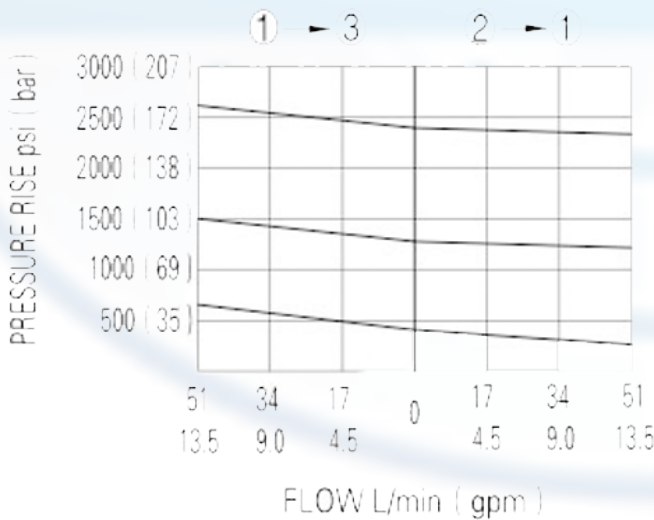


SPECIFICATION:

Max working pressure:	210bar
Flow max:	see performant chart
Internal leakage:	<200cc/min/140bar
Filtration of oil:	25m or better
Temperature:	-30 ~ +110°C
Cavity:	10 - 3
Installatin torque:	34 ~ 37Nm

PERFORMANCE

32 cST Oil/45°C



In its steady state, the valve allows flow to pass bi-directionally from 2 to 1, with the spring chamber constantly drained at 3.

On attainment of a pre-determined pressure at 1, the cartridge shifts to restrict input flow at 2, thereby regulating pressure at 1. In this mode, the valve will also relieve 1 to 3 at over the reducing setting.

to order:

PPR2 - 08 -

Pilot-operated pressure reducing/relieving valves

Cavity

PRESS RANGE:

- 3.5 = 8 ~ 35bar, preset : 14bar
- 12 = 12 ~ 120bar, preset : 70bar
- 21 = 25 ~ 210bar, preset : 120bar