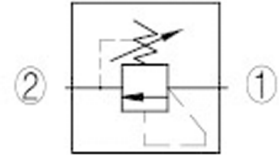
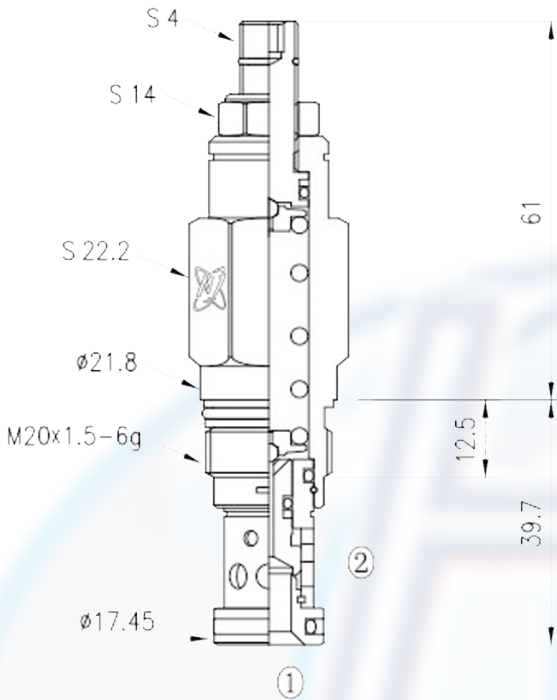


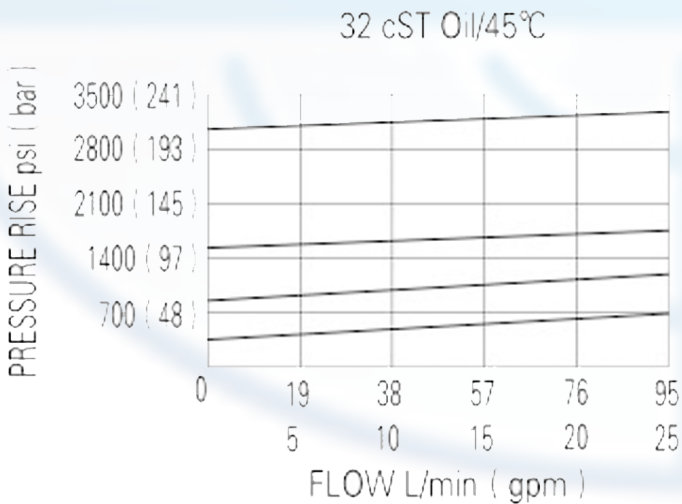
TRDDA - - -



SPECIFICATION:

- Max working pressure: 350bar
- Flow max: see performant chart
- Internal leakage: 0.7cc/min/350bar
- Filtration of oil: 25m or better
- Temperature: -30 ~ +110°C
- Cavity: T - 10A
- Installatin torque: 35 ~ 40Nm

PERFORMANCE



The valve prevents flow from 1 to 2 until the set crack pressure at 1 is achieved.

The poppet then unseats allowing flow from 1 to 2 protecting the circuit from over pressurization.

to order:

TRDDA - - -

Directly operated relief valves

L = standard screw adjustment

SPRING RANGE:

- A = 35 ~ 210bar, preset : 70bar
- B = 20 ~ 105bar, preset : 70bar
- C = 70 ~ 420bar, preset : 70bar
- D = 14 ~ 55bar, preset : 25bar
- E = 7 ~ 25bar, preset : 14bar
- W = 70 ~ 315bar, preset : 70bar

SEAL KITS:

- N = buna
- V = viton