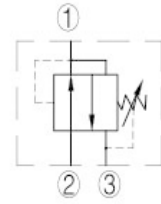
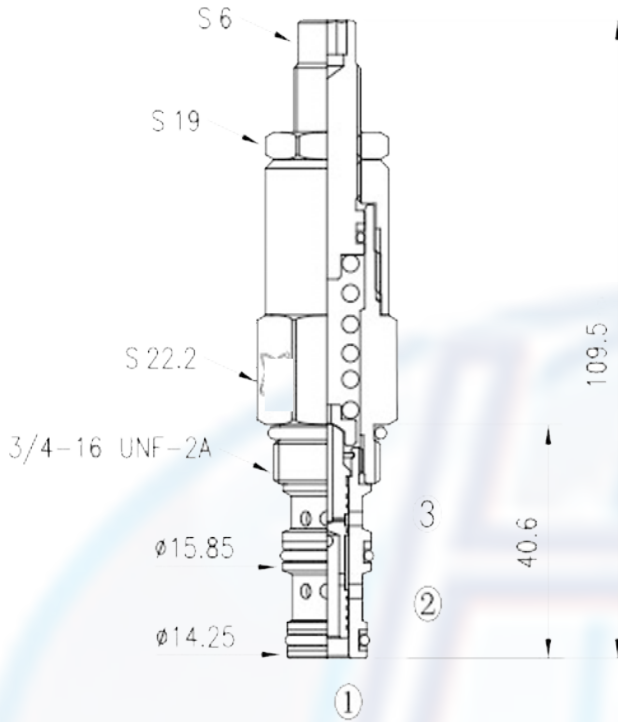


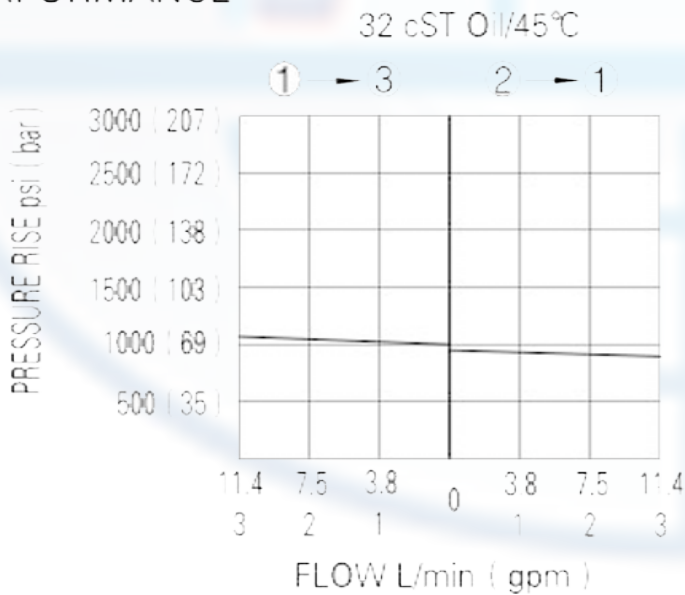
DPR2 - 08 -



SPECIFICATION:

Max working pressure:	210bar
Flow max:	see performant chart
Internal leakage:	<80cc/min/210bar
Filtration of oil:	25m or better
Temperature:	-30 ~ +110°C
Cavity:	08 - 3
Installatin torque:	25 ~ 28Nm

PERFORMANCE



In its steady state, the valve allows flow to pass bi-directionally from 2 to 1, with the spring chamber constantly drained at 3.

On attainment of a pre-determined pressure at 1, the cartridge shifts to restrict input flow at 2, thereby regulating pressure at 1. In this mode, the valve will also relieve 1 to 3 at approximately 10 bar over the reducing setting

to order:

DPR2 - 08 -

Direct-acting pressure
reducing/relieving
valves

Cavity

PRESS RANGE:

- 3 = 3.4 ~ 20.7bar, preset : 10bar
- 6 = 6.9 ~ 41.4bar, preset : 21bar
- 12 = 20.7 ~ 82.8bar, preset : 41bar
- 22 = 34.5 ~ 151bar, preset : 76bar